

PART OF E. 1/2 OF SEC. 19, T. 7 N., R. 1 W., S. L. B. & M.
MOUNTAIN ESTATES SUBDIVISION

LOTS 1-10 23-32

IN PLEASANT VIEW CITY

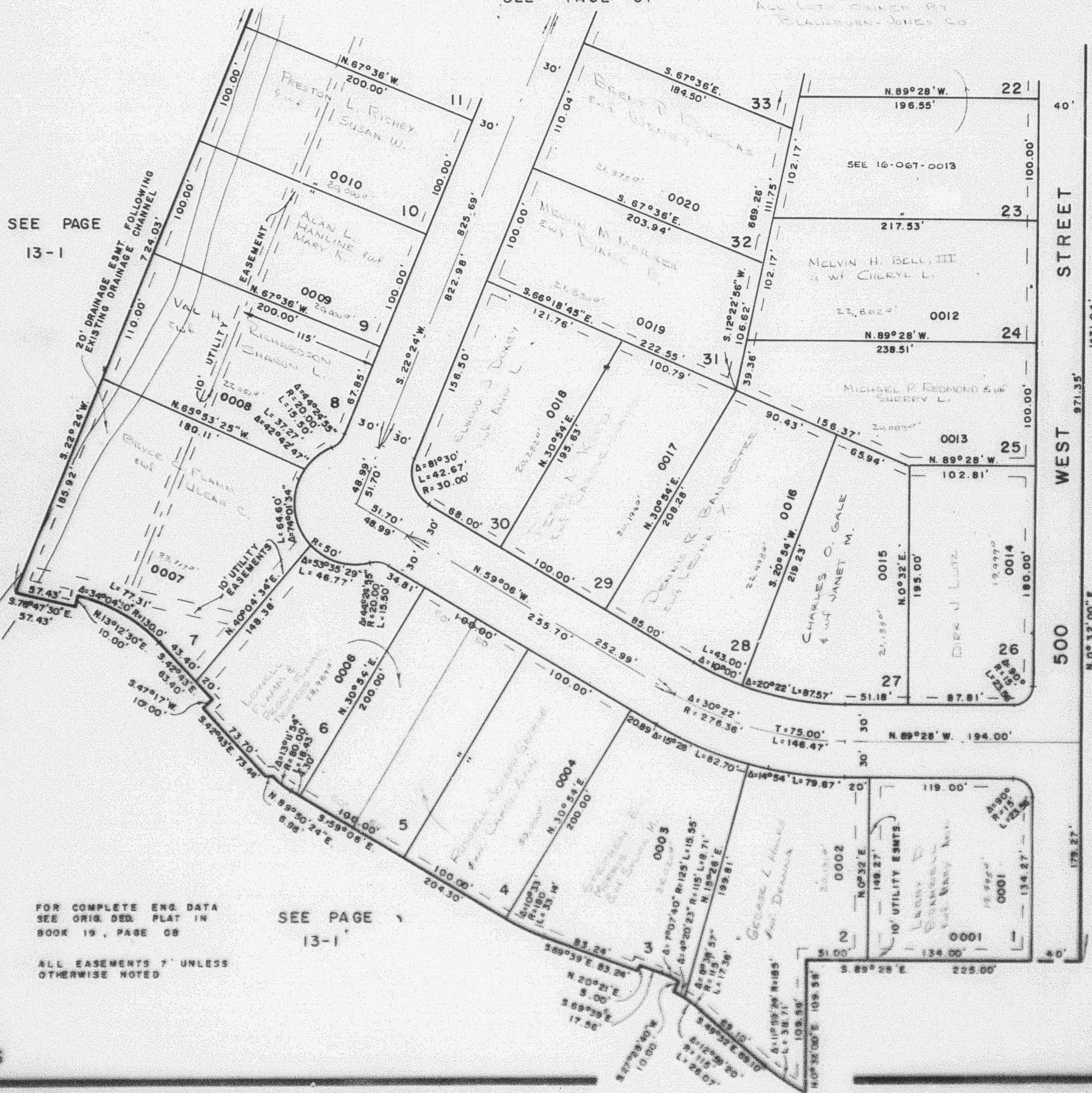
SCALE 1"=60'

SEE PAGE 67

TAXING UNIT: II

PREFIX: 16-066

EXCEPT WHERE OTHERWISE SHOWN
 ALL LOTS OWNED BY
 ELKINGTON-JONES CO.



SEE PAGE
13-1

SEE PAGE
13

FOR COMPLETE ENG. DATA
 SEE ORIG. DED. PLAT IN
 BOOK 19, PAGE 08

SEE PAGE
13-1

ALL EASEMENTS 7' UNLESS
 OTHERWISE NOTED